



carbon^o
presents

Nethaniah

the gift of God



About 2 kms from Wipro H.O, 1 km from RGA Techpark on Sarjapur Road, Bangalore

carbon^o
developers pvt. ltd.

www.carbondevelopers.com



Nethaniah
the gift of God



Nethaniah is **DESIGNED** for **COMMUNITY LIVING**

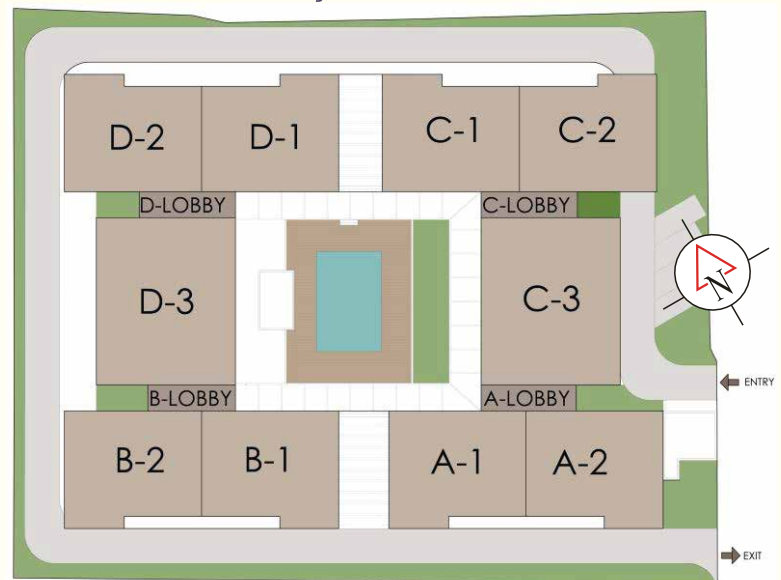
“ the apartments help create a diverse yet similar community of children, home owners and elders and children...”

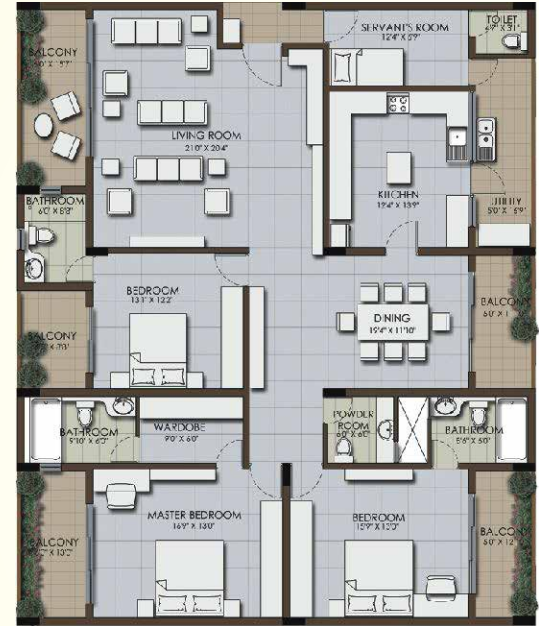
“ the design of ‘Nethaniah’ centre’s around a bright and airy atrium, with a pool as the centre piece...”

“ the apartments at ‘Nethaniah’ are very efficiently designed, with no space wasted, both within and in between homes...”

“ the landscaping and greenery create a pleasant environment for meeting up with the neighbours...”

Consolidated Key Plan





PREMIUM FLAT: D-103, D-203, D-303, D-404, C-103, C-303, C-203, C-403 - 2683 Sq. Ft.



1ST FLOOR TYPE 1:
A-101, B-101, C-101, D-101
1745 Sq. Ft.



1ST FLOOR TYPE 2:
A-102, B-102, C-102, D-102
1745 Sq. Ft.

Specifications:

- Living/Dining/Bedrooms**
- Superior quality Vitrified Tiles
 - Plastic Emulsion Paint
 - OBD for ceiling

- Kitchen**
- Flooring Vitrified tiles
 - Ceramic wall tile upto 2'
 - Black granite 20mm thick kitchen platform
 - SS Sink, OBD for ceiling

- Doors & Windows**
- Burma Teak Main door
 - Internal doors - Flush doors with wooden frame
 - UPVC window frames



3RD FLOOR TYPE 1:
D-301, A-301, B-301, C-301
1763 Sq. Ft.



3RD FLOOR TYPE 2:
D-302, A-302, B-302, C-302
1763 Sq. Ft.



2ND & 4TH FLOOR TYPE 1 :
B-201, B-401, D-201, D-401, A-201,
A-401, C-201, C-401 - 1763 Sq. Ft.



2ND & 4TH FLOOR TYPE 2:
D-202, D-402, B-202, B-402, C-202,
C-402, A-202, A-402 - 1763 Sq. Ft.

Bathrooms & Toilets:

- Anti-skid flooring tile
- Wall tiling upto 7'
- EWC from Parryware or equivalent
- Jaguar or equivalent rang of taps and mixers

Staircase:

- Granite flooring
- M. Steel handrail

Lift:

- Automatic passenger lift Schindler / Otis / Kone / Johnson or equivalent

Power Supply:

- Finolux or equivalent fire resistant wiring
- Anchor Roma modular switches
- One safety ELCB and one MCB in each room
- Generator back up for common area.



Location

Nethaniah is ideally located on Sarjapur Road. It is about 2 kms from Wipro HO and about 1 km from RGA Techpark. It is about 8 kms from Ecospace on the Outer ring road. Sarjapur Road has the best shopping options including Total Mall, and also the best of Educational Institutions nearby.



Location Map



Amenities:

- Swimming Pool
- Party Hall
- Gym
- 2 Designated Car parks per flat
- Sewage Treatment Plant
- Children's Play Area
- Joggers Track
- Central Courtyard



'Nethaniah' is another beautiful, ergonomically designed project from Carbon developers. We are a totally integrated company specializing in Real Estate, Construction and Interior Decoration. We have been in this field for the last 2 decades. We leverage our experience to give our customers the best in quality, commitment, trust and delivery on time, everytime.

carbon
developers pvt. ltd.

#5c / 501, "GEORGE COURT", 3rd Floor
5th A MAIN, 2nd BLOCK, HRBR LAYOUT
Bangalore - 560 043.

Ongoing Projects



Carbon Cornerstone off Hennur Road, North Bangalore



Carbon Parklane Villas in Byrathi, North Bangalore

Site Address

Carbon Nethaniah, Carmelram, Janatha Colony, Chikkabellandur
Bengaluru, Karnataka 560 035.

Contact Us

General Enquiry

sudha@carbondevelopers.com
+91-80-2545 8460, 96861 97225
www.carbondevelopers.com

Sales / Marketing

Contact Person - Martin V
Mobile — +91-91643 05700
Email — martin@carbondevelopers.com
sales@carbondevelopers.com